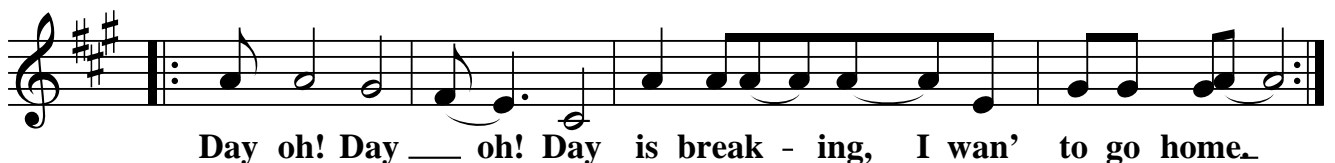
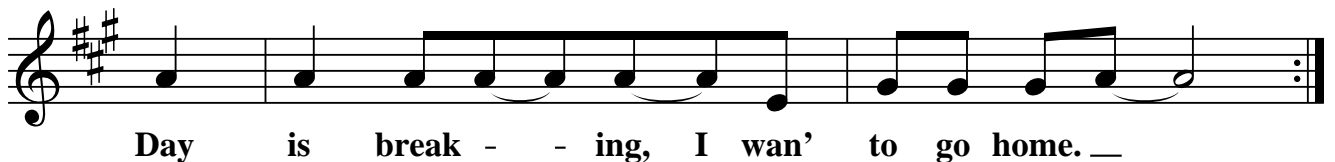
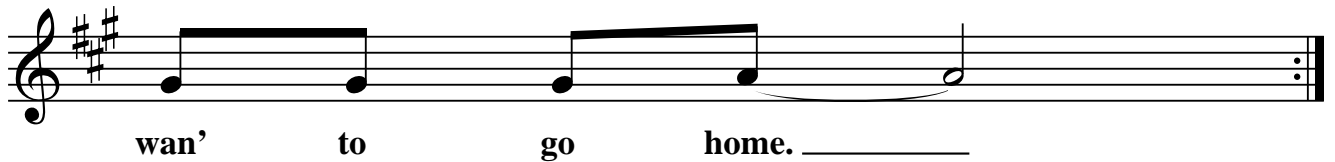


Banana Boat Song



Day oh! Day oh! Day is breaking I wan' to go home.
Day oh! Day oh! Day is breaking I wan' to go home.

Come Mister tally-man, come tally my bananas.
Day is breaking, I wan' to go home.
Come Mister tally-man, come tally my bananas.
Day oh! Day oh! Day is breaking, I wan' to go home.
Day oh! Day oh! Day is breaking, I wan' to go home.

Came here to work, I didn't come to idle

Check them and check them, but check with caution ...

Back is a-breaking with bare exhaustion