

The Mocking Bird



Hush up, ba - - by, don't say a word,



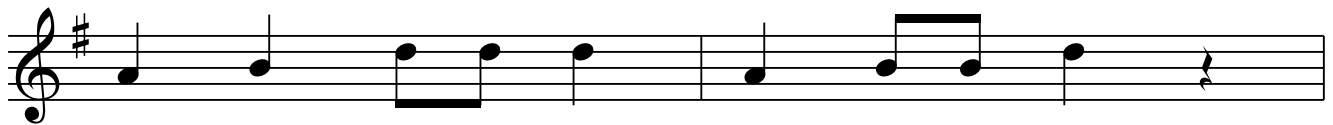
Pa - pa's go - ing to buy you a mock - ing bird.



If it can't whis - tle, and it can't sing.



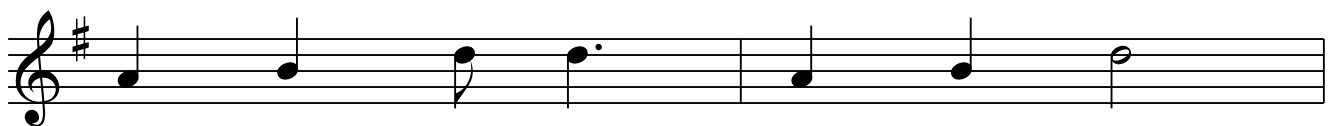
Pa - pa's go - ing to buy you a di - a - mond ring.



If that di - a - mond ring turns to brass,



Pa - pa's go - ing to buy you a look - ing glass.



If that look - ing glass gets broke,



Pa - pa's go - ing to buy you a Bil - - ly goat.



If that Bi - ly goat runs a - - way



Pa - pa's go - ing to buy you an - - oth - er to - - day.

The image shows a single line of musical notation on a five-line staff. The key signature is one sharp (F#), and the time signature is not explicitly shown but appears to be 4/4 based on the note values. The melody consists of the following notes: G4 (quarter), A4 (quarter), B4 (quarter), C5 (quarter), B4 (quarter), A4 (quarter), G4 (quarter), F#4 (quarter), E4 (quarter), D4 (quarter), C4 (quarter), and B3 (quarter). The lyrics are written below the staff, with hyphens indicating syllables that span across multiple notes.